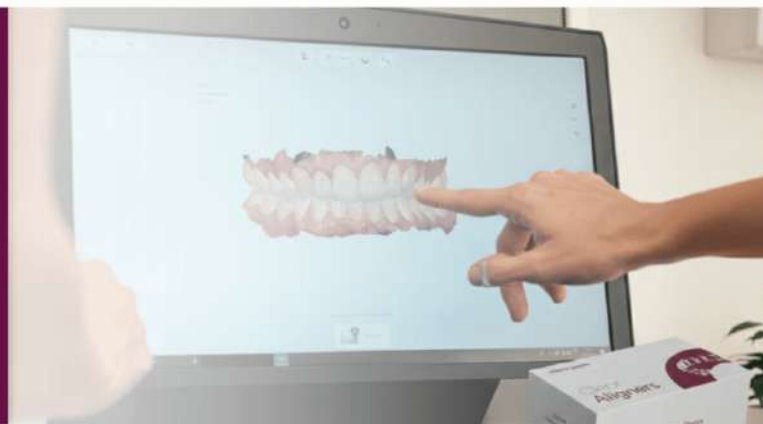


## Smart Tooth Movement Predictable Smile Results



Podcast on this blog is available now! →



### Tooth Movement Process with ClearPath Aligners

Tooth Movement is a carefully controlled biological response that allows orthodontists to reposition teeth safely and predictably. With modern digital planning and advanced materials, the Tooth Movement Process has become more precise than ever. ClearPath Aligners use gentle, continuous forces to guide teeth into better alignment while maintaining comfort and aesthetics. Unlike traditional braces, these transparent trays are removable and discreet, making them a preferred option for adults and teens. At [clearpathortho.com](http://clearpathortho.com), the focus is on delivering the Best Results with Invisible Aligners through scientific planning, accurate staging, and patient-centered care.

[Read More: Tips for Getting the Best Results with Invisible Aligners](#)

### Understanding the Science of Tooth Movement

Orthodontic Tooth Movement occurs when controlled mechanical forces are applied to teeth, stimulating biological changes in the surrounding bone and periodontal ligament (PDL). When pressure is applied:

- The periodontal ligament compresses on one side.
- Bone resorption occurs on the pressure side.
- Bone formation develops on the tension side.

This coordinated remodeling process allows teeth to shift gradually without damaging supporting structures. The Tooth Movement Process depends on:

1. Controlled force magnitude
2. Direction of force
3. Duration of application
4. Patient's biological response

ClearPath Aligners are engineered to apply optimal force levels. Excessive force can damage tissues, while insufficient force may delay progress. Precision is key to achieving safe Bite Alignment.

[Read More: What to Expect in Your First Week with Clear Aligners](#)

### How ClearPath Aligners Work

#### Digital Planning and 3D Mapping

The journey begins with digital impressions and 3D scanning. Orthodontists create a customized treatment plan that maps each stage of Tooth Movement from start to finish. Every aligner tray represents a small, controlled adjustment.

#### Controlled Force Application

Each aligner:

- Applies calculated pressure to specific teeth
- Moves teeth incrementally
- Is worn 20–22 hours daily

The gradual sequence ensures the Tooth Movement Process remains biologically safe and predictable.

#### Progressive Staging

Instead of forcing large movements at once, ClearPath Aligners break treatment into small steps. This staging improves comfort and enhances the Best Results with Invisible Aligners.

## Types of Tooth Movement Achieved with ClearPath Aligners

Orthodontics recognizes different categories of Tooth Movement, including:

1. **Tipping** – Tilting the crown of a tooth
2. **Bodily Movement** – Entire tooth shifts together
3. **Rotation** – Turning a tooth around its axis
4. **Intrusion** – Moving a tooth inward into bone
5. **Extrusion** – Moving a tooth outward
6. **Torque** – Adjusting root positioning

ClearPath Aligners are designed to perform these movements using attachments and optimized force distribution.

[Read More: How Clear Aligners Improve Oral Health—Not Just Your Smile](#)

## Step-by-Step Tooth Movement Process

### Step 1: Consultation and Diagnosis

Clinical examination, X-rays, and digital scans determine eligibility for Affordable Aligners treatment.

### Step 2: Customized Treatment Planning

Advanced software simulates Tooth Movement from current alignment to Ideal Bite Alignment.

### Step 3: Fabrication of Aligners

A series of custom trays are manufactured to guide the Tooth Movement Process.

### Step 4: Active Treatment Phase

Patients switch aligners every 1–2 weeks, gradually progressing through stages.

### Step 5: Monitoring and Refinements

Regular checkups ensure the Tooth Movement remains on track.

### Step 6: Retention Phase

Retainers maintain new Bite Alignment and prevent relapse.

## Biological Phases of Tooth Movement

The Tooth Movement Process follows three biological phases:

### 1. Initial Phase

The tooth shifts slightly within the periodontal ligament space.

### 2. Lag Phase

Temporary slowing occurs as bone remodeling begins.

### 3. Post-Lag Phase

Steady movement resumes as bone adapts.

ClearPath Aligners maintain gentle continuous force, supporting healthy remodeling.

[Read More: How Can Aligned Teeth Benefit Your Health Beyond Aesthetics](#)

## Benefits of ClearPath Aligners

- Nearly invisible appearance
- Comfortable smooth material
- Removable for eating and brushing
- Digital precision planning
- Fewer clinic visits
- Predictable Tooth Movement
- Supports Improved Bite Alignment
- Cost-effective and Affordable Aligners options

Patients seeking the Best Results with Invisible Aligners appreciate both aesthetic and functional improvements.

[Read More: How to Manage Clear Aligners While Fasting](#)

## Bite Alignment and Functional Improvement

Correct Bite Alignment is more than cosmetic. Misaligned bites can cause:

- Jaw discomfort
- Uneven tooth wear
- Speech issues
- Difficulty chewing

The Tooth Movement Process with ClearPath Aligners corrects overbite, underbite, crossbite, and open bite patterns. Improved Bite Alignment enhances oral health and facial harmony.

## Best Results with Invisible Aligners: Key Factors

To achieve the Best Results with Invisible Aligners, patients should:

- Wear aligners 20–22 hours daily
- Switch trays as directed
- Maintain oral hygiene
- Attend follow-up appointments
- Use retainers after treatment

Compliance significantly impacts the success of the Tooth Movement Process.

Safety and Predictability

Scientific research confirms that controlled orthodontic force stimulates bone remodeling safely. ClearPath Aligners apply consistent, light pressure, minimizing risk of root damage when supervised by qualified professionals.

The Tooth Movement Process is carefully monitored to prevent:

- Root resorption
- Gum recession
- Bone loss

Regular evaluations ensure optimal outcomes.

How Long Does Tooth Movement Take?

Treatment duration varies based on:

- Severity of misalignment
- Age of patient
- Biological response
- Compliance level

Most cases range from 6 to 18 months. Minor corrections may require shorter timelines.

Affordable Aligners Without Compromising Quality

Many patients assume clear aligners are expensive. ClearPath offers Affordable Aligners options with flexible payment plans. Cost transparency and digital efficiency make advanced orthodontics more accessible.

Affordability does not compromise scientific precision. The same Tooth Movement Process principles apply to ensure safe and effective Bite Alignment.

Maintaining Results After Treatment

Retention is crucial. After completing active Tooth Movement:

- Wear retainers as prescribed
- Maintain oral hygiene
- Schedule periodic checkups

Without retention, teeth may shift back due to natural biological memory.

End Note

The Tooth Movement Process with ClearPath Aligners combines biological science, digital precision, and patient compliance to achieve safe and predictable alignment. By applying controlled forces, stimulating bone remodeling, and following staged progression, ClearPath Aligners deliver effective Bite Alignment improvements.

For patients seeking the Best Results with Invisible Aligners, understanding how Tooth Movement works builds confidence in treatment. With expert supervision and Affordable Aligners options, achieving a healthier, straighter smile is both attainable and reliable.

FAQs

1. Is Tooth Movement painful?	+
2. How do ClearPath Aligners create Tooth Movement?	+
3. Are ClearPath Aligners suitable for everyone?	+
4. How can I get the Best Results with Invisible Aligners?	+
5. Are these Affordable Aligners effective?	+
6. Can aligners fix bite problems?	+



Reshaping the future of orthodontics



Quick Links

- About
- Our Product
- Knowledge Center
- Partner with us
- Careers

Support

- Blogs
- Contact Us
- Privacy Policy

Contact Info

- +92 42 111 333 276
- support@clearpathortho.com
- 6N, Main Boulevard Johar Town, Lahore

